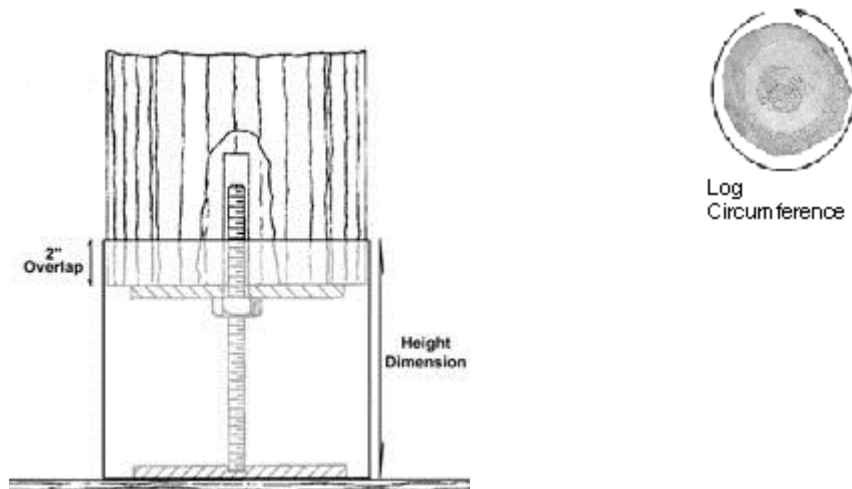


## Measuring for Jack Wrap

### Jack-Wrap®



**You need a minimum of 2 inches of overlap of the Jack-Wrap® on the log post for proper installation.**

**Measure circumference as shown above. Itemize each log's complete circumference to the nearest 1/2". (Example 28 1/2, 32, etc.)**

### Helpful Hints

When ordering Jack-Wrap, be sure to measure every log to make sure you get the proper fit for each log post. The height of the Copper needs to overlap the log post by 2". Every Jack-Wrap is a custom hand made product to ensure a tailored fit on your log home.

The decorative solid Copper jack cover may have minor scratches, which is typical of this material. Over time, the Copper will take on a rich patina and any imperfections will disappear.