

# Leveler Installation

Thank you for purchasing the Nortek® Leveler. Nortek® Levelers have been commercially tested & certified for load capacity, nut adjustment & material requirements. The report is available upon request & at [www.nortekcopperworks.com](http://www.nortekcopperworks.com). Call, toll free, **(888)488-2380**.

Nortek® is committed to producing the highest quality products. We only use the highest quality materials available & 100% inspect our products before we ship them to you. Please call with questions or suggestions.

## Leveler Installation Recommendations

Nortek® Levelers are designed to provide a secure & reliable means of maintaining a level structure in vertical load applications.

The Nortek® 6680 & 4430 Levelers are designed to handle a maximum of 20,000 lb. of vertical load. Tangential loads will greatly reduce the capacity of these levelers. Load must be a true 90° +/- ¼° from the mounting surface. A structural engineer should evaluate all applications of the Nortek® Leveler.

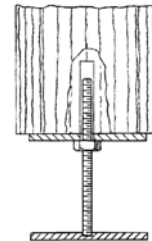
### 4430 INSTALLATION SPECIFICATIONS

**Leveler Screw Clearance Hole:** Minimum 1 1/8" diameter x 4" deep.

**Mounting Plates:** 5/16" Diameter anchors or lag bolts.

**Top Plate:** Bolts are not required. Securing is optional on all Top Plates.

May toe nail into position.



### 6680 INSTALLATION SPECIFICATIONS

**Leveler Screw Clearance Hole:**

Minimum 1 1/8" diameter x 9" deep.

**Mounting Plates:** 5/16" Diameter anchors or lag bolts.



### 5050 INSTALLATION SPECIFICATIONS

**Top Locking Plate:** For a more secure connection from the support post to base.

Not rated for uplift. Consult a Structural Engineer for your application.

**Mounting Plates:** 5/16" Diameter anchors or lag bolts.



## Return Policy

Nortek® stands behind our product's quality & workmanship.

NORTEK® IS NOT RESPONSIBLE FOR IMPROPER MEASUREMENTS PROVIDED TO US. The product must be returned to us within 30 days from the date of shipment. It must be returned in like-new condition prior to any drilling required in some installations. Shipping cost are non-refundable & restocking fee of 20%.

Exceptions to this policy are: 1) Special ordered products/parts; or 2) Used and damaged parts. Any part which, in our opinion, shows evidence of being used or installed contrary to the installation instructions and/or subjected to improper handling, packaging or shipping by the customer will not be eligible for exchange or refund consideration. There is a 20% restocking fee on our standard product line. All sales are final on custom orders.

This return policy does not cover damage resulting from accident, misuse or abuse, affixing of any attachments not provided with the product or loss of parts.

**IN NO EVENT SHALL NORTEK® BE LIABLE FOR ANY IMPROPER INSTALLATION OF A PRODUCT, INCIDENTAL OR CONSEQUENTIAL DAMAGES NOR FOR ANY DAMAGES RESULTING FROM MISUSE OR MODIFICATION OF OUR PRODUCTS. A STRUCTURAL ENGINEER SHOULD BE CONSULTED FOR YOUR SPECIFIC APPLICATION.**