



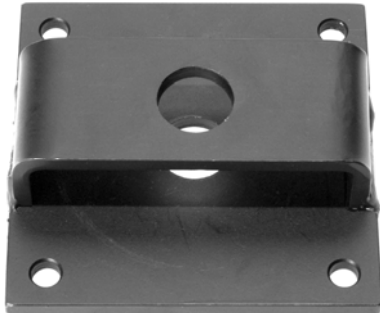
A Division of SAE Corporation

Nortek®

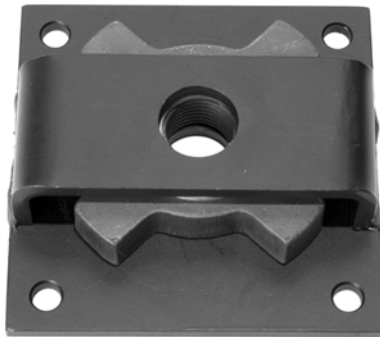
(888) 488-2380

FAX: (715) 324-5754

www.nortekcopperworks.com



5050 Top Locking Plate



Locking Plate w Spider Nut

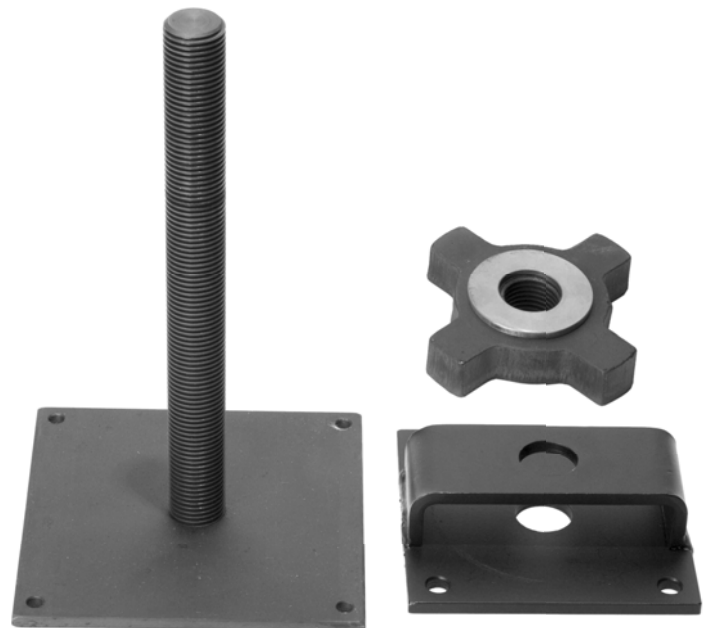
The *Nortek®* Top Locking Plate

SPECIFICATIONS

- 5"x5" Locking Plate. (Weldment)
- Locks exterior support posts securely, guarding against wind uplifts.
- 1/4" plate with 1 1/16" clearance hole.
- BLACK OXIDIZED.

ADVANTAGES

- Works with both the Nortek® Leveler 6680 & 4430.
- Easily adjustable with punch & sledge.
- Precision manufactured for strength & durability.
- Sold separately.



NOTE: A structural engineer should evaluate your specific applications of all Nortek® Leveler products.